

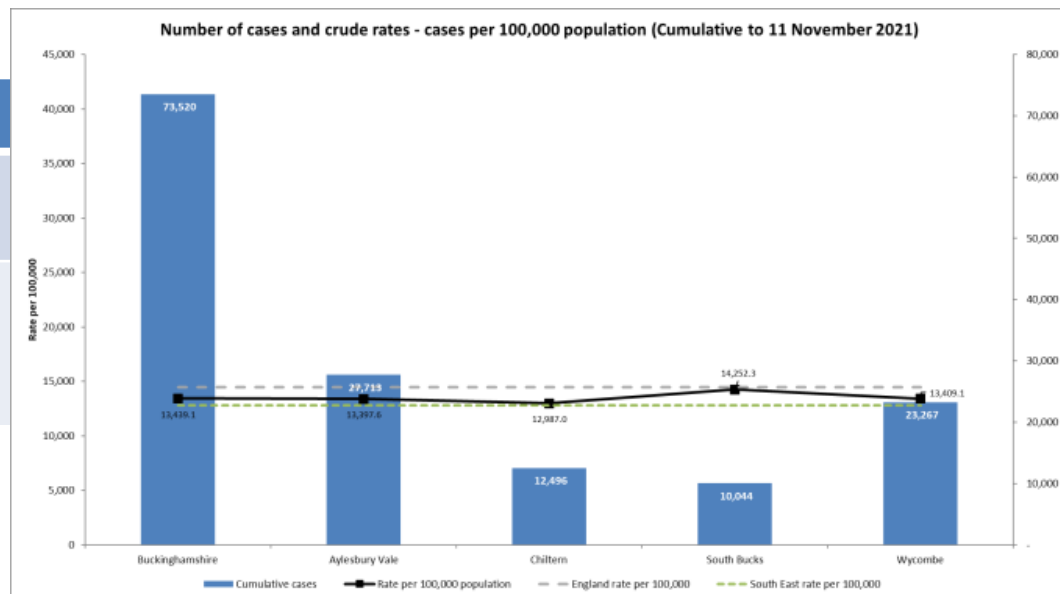
Health & Wellbeing Board

Buckinghamshire

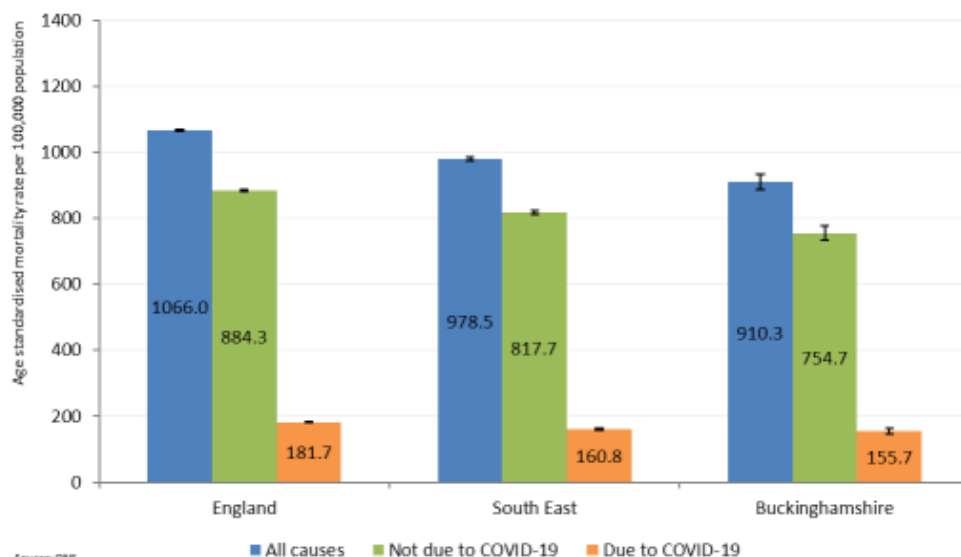
COVID - cumulative cases and deaths

	Buckinghamshire
Cumulative no. of cases to 11 th November 2021	73,520
Cumulative no. of deaths* to 5 th November 2021	1,286

* The number of deaths involving coronavirus (COVID-19), based on any mention of COVID-19 on the death certificate.



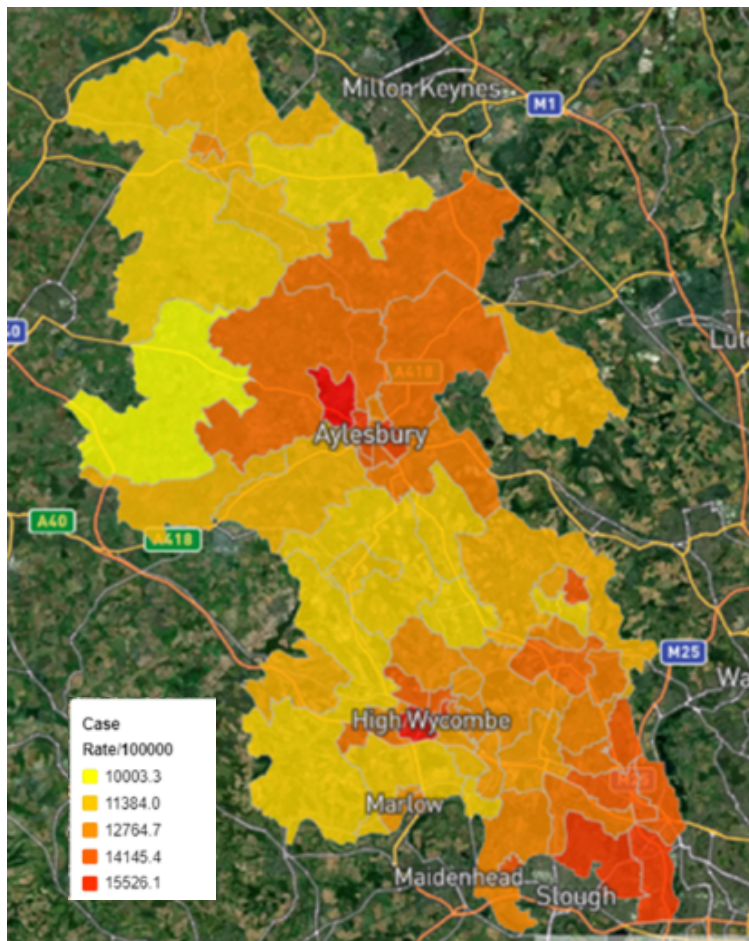
Age standardised mortality rates by cause, PERSONS
March 2020 to April 2021



Cumulative case rate per 100,000 population up to 11 November 2021:

- Buckinghamshire = 13,439 per 100,000
- South East = 12,781 per 100,000
- England = 14,457 per 100,000

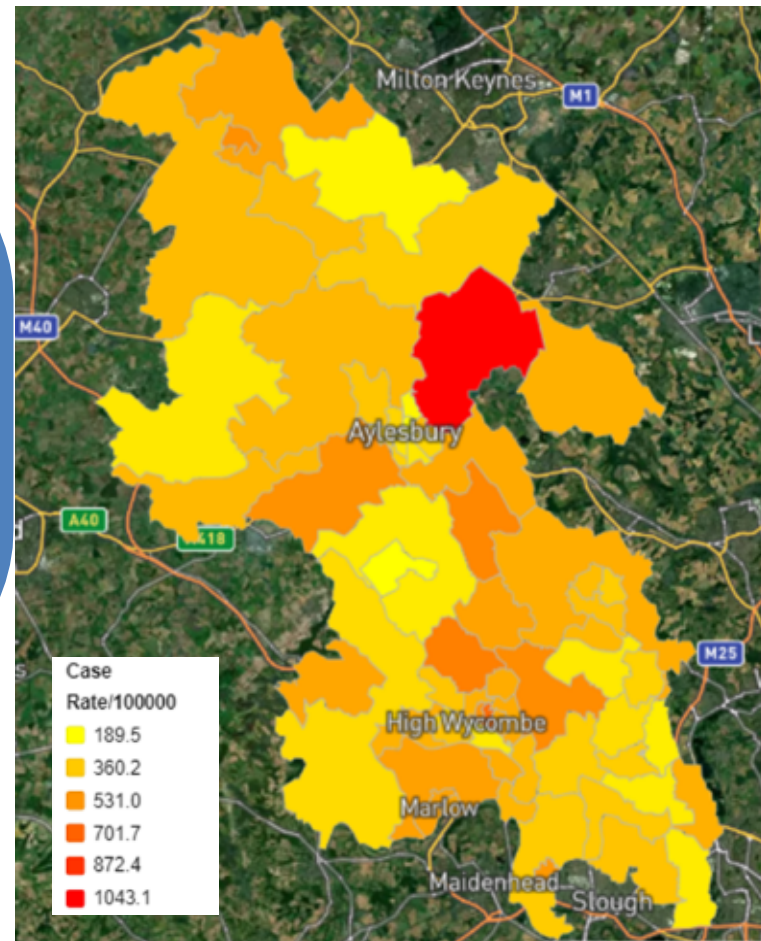
COVID Cumulative and latest week cases in Buckinghamshire



COVID-19 Rates by MSA

<Cumulative since 1 March 2020

latest week>

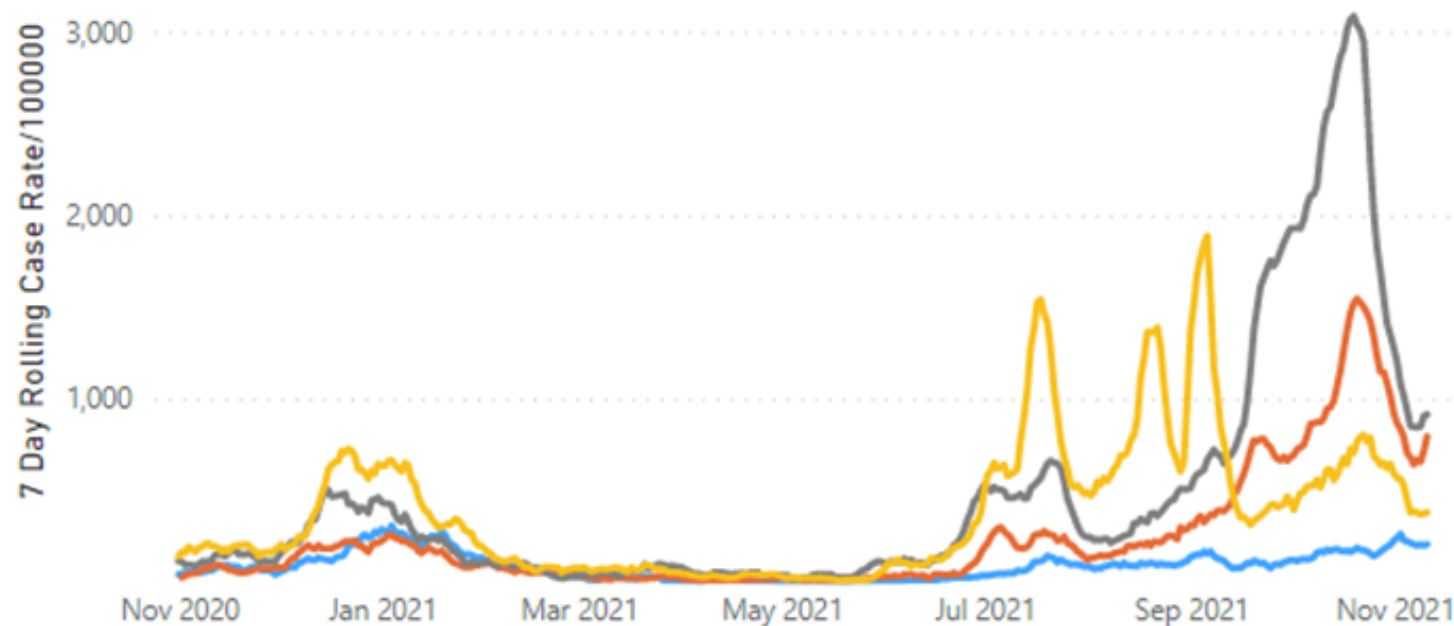


Age of Buckinghamshire COVID-19 Cases

Current case rate for 5 to 11 November is **401.6** per 100,000 in Buckinghamshire, compared with 383.1 in the South East and 364.2 in England as a whole.

7 Day rolling number of COVID cases per 100,000 population* (weekly incidence) by age: 0 to 18 years

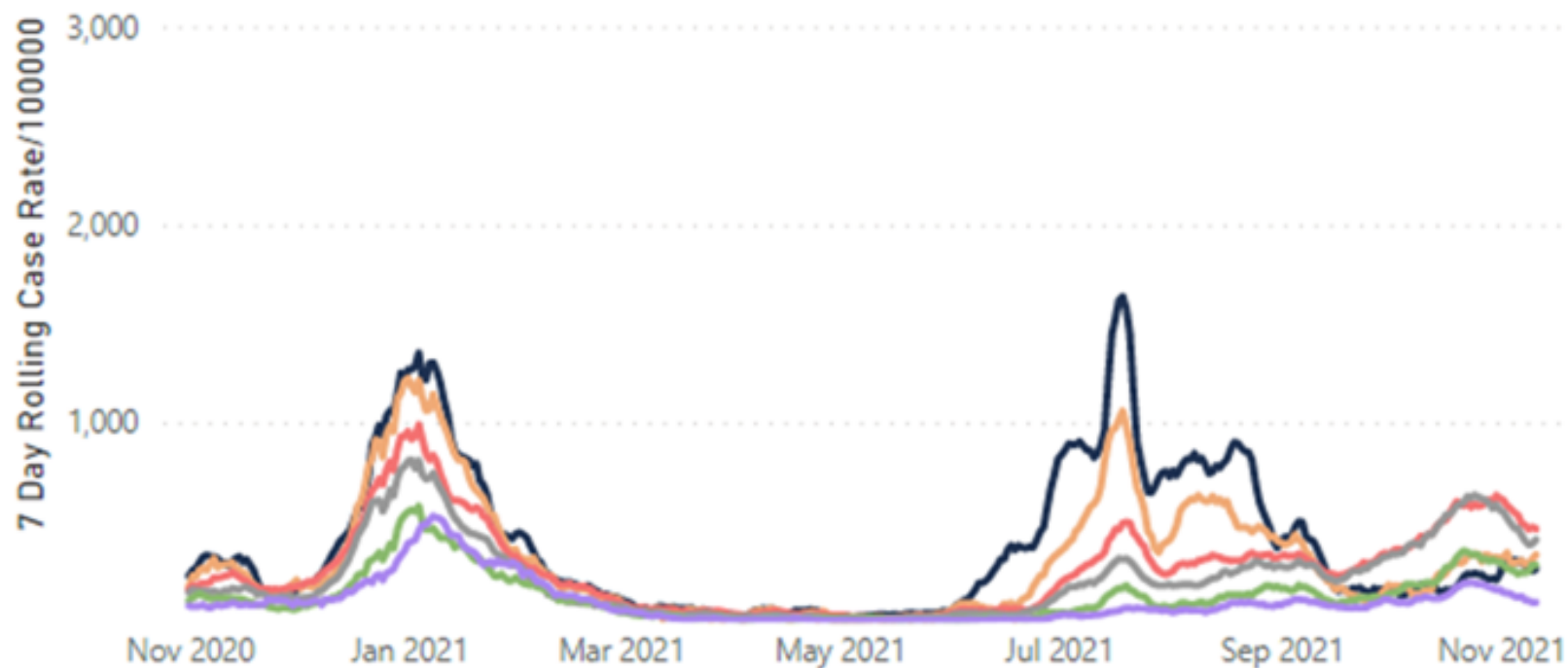
Demographic Age Bands ● 0 - 4 ● 05 - 10 ● 11 - 15 ● 16 - 18



Age of Buckinghamshire COVID-19 Cases

7 Day rolling number of COVID cases per 100,000* population (weekly incidence) by age: 19 years and over

Demographic Age Bands ● 19 - 24 ● 25 - 29 ● 30 - 44 ● 45 - 59 ● 60 - 69 ● 70+

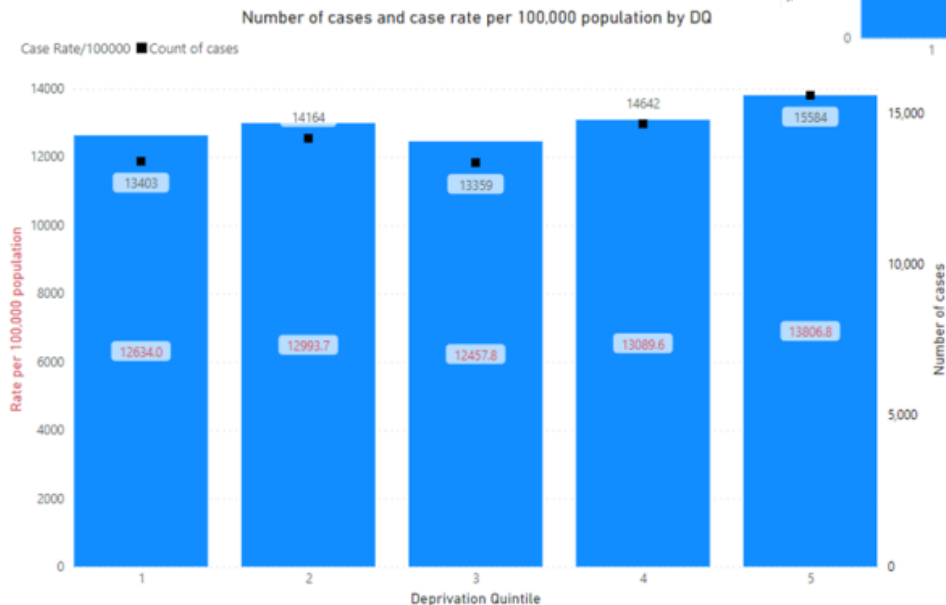


Deprivation

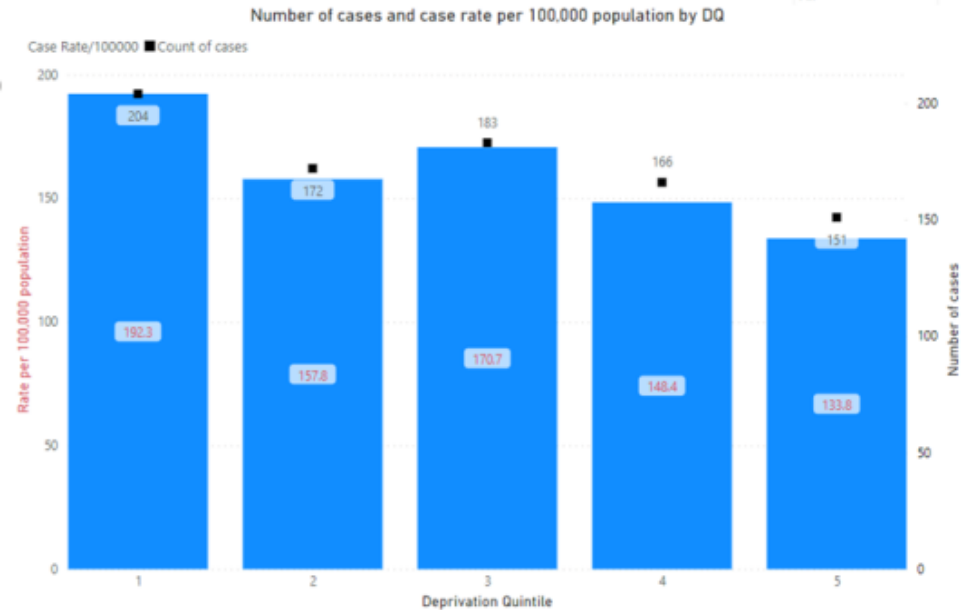
Cumulative case rate by deprivation shows higher rates in the more deprived areas.

The recent case rate shows a different trend with higher rates in the least deprived areas, although differences are not significant.

Cumulative



Latest week



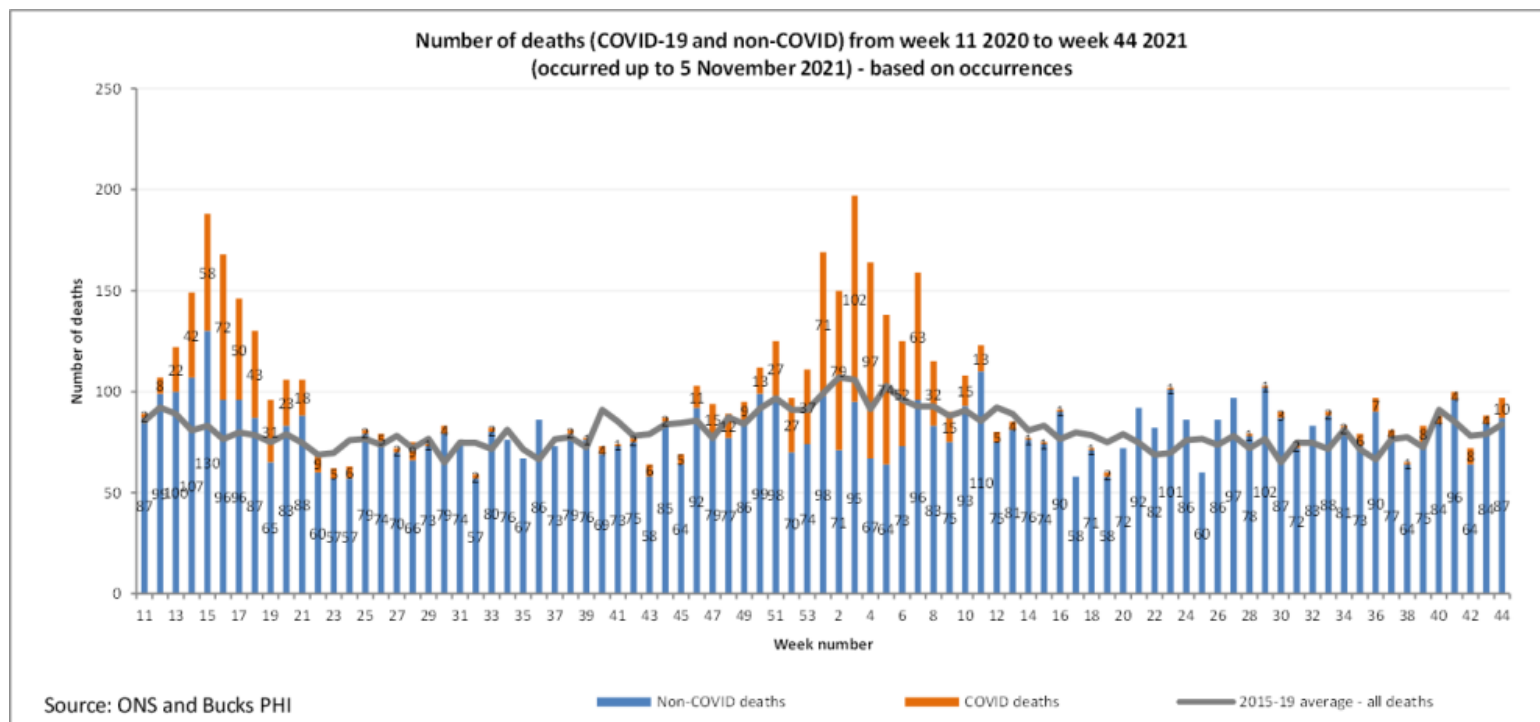
Deprivation quintile 1 = least deprived within Buckinghamshire
Deprivation quintile 5 = most deprived within Buckinghamshire

COVID-19 Hospital admissions-

	3 weeks before	2 weeks before	1 week before	Most Recent
New COVID Admissions	11 to 17 Oct	18 to 24 Oct	25 to 31 Oct	1 to 7 Nov
Buckinghamshire HT	26	26	27	27
Frimley Health	59	64	87	64
Milton Keynes	28	27	44	35
Total	113	117	158	126
Inpatients with COVID-19 (# of these in ICU)	On 19 Oct	On 26 Oct	On 2 Nov	On 9 Nov
Buckinghamshire HT	27 (4)	37 (3)	25 (2)	33 (3)
Frimley Health	56 (8)	90 (10)	96 (6)	83 (9)
Milton Keynes	33 (1)	33 (1)	45 (2)	47 (3)
Total	116 (13)	160 (14)	166 (10)	163 (15)

NB: Not all cases who are included above reside in Buckinghamshire. These data are publicly available data.

COVID-19 Related Deaths - Buckinghamshire residents



In the last reported week (**up to 5 November**), there were **10 deaths** related to COVID-19* for a Buckinghamshire resident.

1,286 COVID deaths overall, twice as many in the second wave compared to the first.

Data from the Office for National Statistics.

COVID-19 Vaccinations - Buckinghamshire residents

- More than 86% of adults in Buckinghamshire have had one dose of Covid-19 vaccine and **more than 83% have had both doses.**
- However, this leaves just under **60,000 people** (aged 18+) **unvaccinated** and an additional **15,000 people** who have **only had one dose** within Buckinghamshire.
- Uptake has been highest in older age groups, 92% of people aged 40 and over have had one dose of Covid-19 vaccine and 90% have had both doses
- A booster programme for all adults aged 40 and over, people in flu/Covid-19 risk groups and household contacts of immunosuppressed people is being delivered.



NHS Vaccine Voices

You can play an important role in the NHS COVID-19 vaccine rollout.
Do you want to help your friends, family and neighbours make an informed choice about having the COVID-19 vaccine?

Become an NHS Vaccine Voice!

Join us for a free 90 minute online training session where we will help you to develop your skills in having empowering conversations and sharing key facts with those around you.

A little bit of your time can make a BIG DIFFERENCE

If you work or live in Buckinghamshire you can sign up for training today!

We welcome people in all our communities across Bucks, especially those where vaccine confidence needs to be improved.

Visit buckinghamshires.nhs.uk/vaccine-voices for dates and how to sign up.



Variation in vaccine uptake

- Younger adults, men, people living in more deprived areas and people from ethnic minorities (most markedly people from White Other and Black ethnic categories) are less likely to have been vaccinated
- Uptake has tended to be lower in areas that have persistently had the highest infection rates in Buckinghamshire (parts of High Wycombe, Aylesbury and South Bucks)
- Inequalities in uptake are being addressed through community outreach clinics, the Health on the Move bus and new NHS Bucks Vaccine Voices training

More information

For more information please see the
Buckinghamshire COVID dashboard

[https://covid-
dashboard.buckinghamshire.gov.uk/](https://covid-dashboard.buckinghamshire.gov.uk/)